

Downtown Brooklyn Arts Alliance Member Rental Space Information

BAX/Brooklyn Arts Exchange

BRIC

Brooklyn Ballet

Brooklyn Conservatory of Music

Brooklyn Music School

JACK

Mark Morris Dance Group

Mitu580/Theater Mitu

Polonsky Shakespeare Center -Theatre For A New Audience

Roulette Intermedium

Smack Mellon

The Center for Fiction

**DOWNTOWN BROOKLYN
ARTS ALLIANCE**

BAX BROOKLYN ARTS EXCHANGE

BAX Spaces:

The **BAX** building at **421 5th Avenue in Park Slope** houses four beautiful, well-equipped, multi-purpose studios one of which doubles as a **70-seat black box Theater**. We rent our spaces for dance, theater, and performance rehearsals, classes, workshops, meetings, auditions, readings, informal showings, performances, special events, and more.

BAX is roughly one (1) avenue block and 1.5 street blocks away from the 9th Street/4th Avenue F/G/Q/R Subway Station.

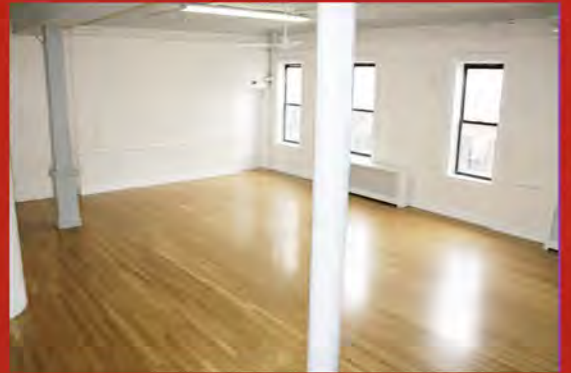
BAX is on the 2nd and 3rd floors of the building, accessible by stairs with no lift or elevator. However, we make every effort to help folks with mobility challenges reach our space. If you have a specific request or need, please reach out to us at info@bax.org.

Studio A: 26 x 35 feet

Studio B: 26 x 30 feet

Studio C: 18 x 39 feet

Studio D: 28 x 42 feet



Studio A



Studio B



Studio C



Studio D

Artist Studio

Intimate, flexible space ideal for rehearsals, performances, meetings and more (70 capacity)



CONTACT US

For rental rates and availability,
visit BRICartsmedia.org/rentals
to fill out an inquiry form or call
718.683.5600

BRIC

Host Your Event at BRIC House!

BRIC House is a unique arts and media center centrally located in the Brooklyn Cultural District. We offer versatile, contemporary spaces with state-of-the-art technology and a welcoming staff committed to making your event a success!



Lobby & Stoop



Sun-filled public atrium overlooking our Contemporary Art Gallery. Great for receptions, panel discussions, performances and more (175 performance, 250 standing reception)



Ballroom



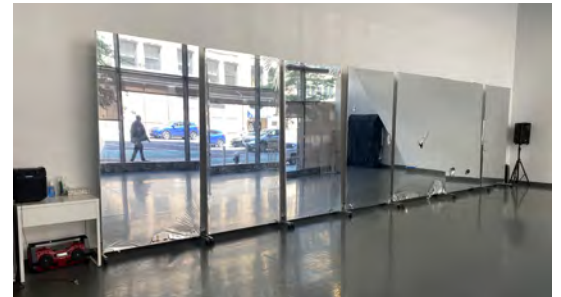
Flexible state-of-the-art performance and event space. Perfect for galas, screenings, theater/concert performances and more (260 seated dinner, 250 theater style seating, 440 standing)



PHOTOS: LEESER ARCHITECTURE, JENNA SALVAGIN, LIZ LIGON, DAVID ANDRANKO



BROOKLYN BALLET STUDIO RENTAL



Located in Downtown Brooklyn, our state-of-the-art facility consists of a column-free 25 x 35 ft. dance studio, lobby/waiting area, and two dressing rooms.

The studio features a sprung dance floor, marley, portable mirrors, ballet barres, and a stereo system. With floor-to-ceiling windows facing the street, the studio offers plenty of natural light. Our location in the heart of downtown Brooklyn is convenient to multiple subway and bus lines. The studio is also wheelchair accessible.

Discounted rehearsal space for independent choreographers and non-profit dance companies is made possible by grants from the New York State Council on the Arts and the Mertz Gilmore Foundation.

Booking requests, email info@brooklynballet.org.

2023/2024 RATES

**NYSCA Subsidized Rate
for Rehearsals:**
\$10/hour

Private Lessons:
\$50/hour

Group Classes & Auditions:
\$70/hour

**Photo/Video Shoots,
Performances, and
Special Events:**
\$125/hour + \$50 food/
beverage cleaning fee
(if applicable)



BROOKLYN
MUSIC SCHOOL
—discover the joy of music—

Brooklyn Music School
126 Saint Felix Street
Brooklyn, NY 11217
718-638-5660
www.brooklynmusicschool.org

Rental Spaces at the Brooklyn Music School



Brooklyn Music School is a community music school that is located in the heart of Fort Greene, Brooklyn. BMS offers rental spaces for practice, rehearsals, readings, recitals, performances, etc. at affordable rates. Inquire over the phone at (718) 638-5660 or email us at contactus@brooklynmusicschool.org.

Transportation

B D N Q R 2 3 4 5 Atlantic Avenue/Barclays Center

C Lafayette Avenue

G Fulton Street

Hours

Monday through Friday:

Saturday:

Sunday:

September-June

9:00am-8:00pm

9:00am-5:00pm

9:00am-5:00pm

July-August

8:00am-7:00pm

9:00am-5:00pm

CLOSED

Rates

Practice Room (One person): \$20/hr

Practice Room (2 or more people): \$3 per additional person

Classroom (One Person): \$23/hour

Classroom (2 or more people): \$3 per additional person

Band Room: \$25/hr (Daytime) or \$30/hr (Evening)

MacDowell Room: \$30/hr

Fourth Floor Dance Studio/Downstairs Dance Studio: \$30/hr

Theater: Prices Vary



BROOKLYN
MUSIC SCHOOL
—discover the joy of music—

Brooklyn Music School
126 Saint Felix Street
Brooklyn, NY 11217
718-638-5660
www.brooklynmusicschool.org

BMS Theater: Where Magical Events Happen



The Brooklyn Music School's 250-seat, Spanish style theater provides a unique and historic atmosphere for student productions, community interaction, and third-party productions. Our heritage and pedagogy places performance at the center of BMS's approach to music, dance and theater. The intimate scale and historic charm of our theater make it ideal for a range of artistic and community-oriented events, and BMS tech and support team are here to support your vision. Reach out today to see how we can work together.

BASIC PACKAGE AND THEATER RULES THEATER ENVIRONS SHALL INCLUDE:

- Stage house
- Theater auditorium, including audience bathrooms
- Theater Lobby
- Downstairs Greenroom Lobby, 2 Dressing rooms and 2 Lavatories
- Loading/Stage door entrance and ramp area

BASIC THEATER LIGHTING AND SOUND PACKAGE:

- 12 – 1.2K Dimmers
- 1 – Lighting control board - computer based to EOS ETC Nomad
- Rep Plot lighting instruments (may vary according to usage- minimum of 3 front lights, 3 mid-stage front lights, 6 fresnel down lights, 4 side lights in wings 1 and 2, strip lights for upstage drop-2 colors) - instruments may not be moved or refocused
- 1 - 20 channel sound board
- 2 – JBL speakers, mounted in proscenium arch, facing auditorium
- 4 – 25' 3-pin XLR cables
- 4 – SM58 microphones

BASIC THEATER CONDITION:

- Floor of stage – ¼" Masonite painted black – Marley is available at additional cost
- 8 – 4' x 16' hard covered masking flats – They may not move
- 1 – white cyclorama backdrop with black masking on left and right
- 4 – Electric battens

@JACKNY

RENTALS @ JACK



HAVE AN IDEA?
HIT US UP

JACK IS CAN BE A HOME FOR....

- **PERFORMANCES**
- **PARTIES**
- **REHEARSALS**
- **CLASSES/WORKSHOPS**
- **FILM SCREENINGS**
- **PHOTO/FILM SHOOTS**
- **AND MORE...**

20 Putnam Avenue, Brooklyn NY

For more information check out www.jackny.org/rentals

OUR SPACE

JACK



Features and Specs

**CLICK HERE TO CHECK
OUT OUR PRICING
& GET MORE INFO**

- Our Interior Space is apx 44' x 29'
- Room capacity is 74 people.
- Our space is equip with:
 - Lobby
 - Box Office
 - Dressing Room
 - 3 gender neutral bathrooms (1 ADA accessible)
 - 59 audience chairs/10 black metal folding chairs
 - PA system
 - Theatrical lighting

Space Rentals

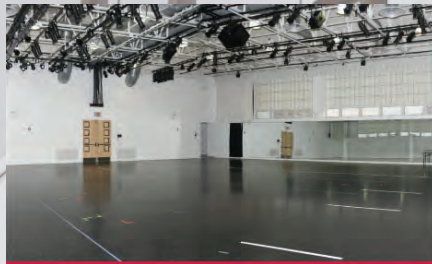
The Mark Morris Dance Center's studios and ancillary spaces are available for a wide variety of rentals, including rehearsals, workshops and auditions, film and photo shoots, Performances and shows, and Meetings and Conferences. Our column-free dance studios are clean and bright with natural light, and fully equipped with triple-basket weave sprung sub floors, portable and fixed ballet barres, pianos, sound playback systems, video streaming equipment, and central heat and air-conditioning.

at the
**MARK
MORRIS
DANCE
CENTER**

Space	Dimensions	Maximum Capacity	Location
James and Martha Duffy Performance Space (Duffy)	60' x 60' (3,600 sq. ft.)	225	5 th floor
Robert W. Cole Studio (Cole)	38' x 51' (1,938 sq. ft.)	74	4 th floor
Maxine Morris Studio	30' x 46' (1,380 sq. ft.)	50	1 st floor
Studio E	29' x 53' (1,537 sq. ft.)	40	Fishman Space - 1 st floor
Studio F	28' x 40' (1,120 sq. ft.)	30	Fishman Space - lower level
Howard Hodgkin Studio (Hodgkin)	23' x 38' (874 sq. ft.)	25	1 st floor
Studio B	24' x 33' (792 sq. ft.)	25	1 st floor
Independence Community Foundation Studio (ICF)	18' x 40' (720 sq. ft.)	32	4 th floor
Studio D	17' x 20' (320 sq. ft.)	7	mezzanine

Amenities	Climate Control	Column Free	Mirror	Sound System	Marley Floor	Natural Light	Piano	Portable & fixed ballet barres	Mirror Curtain	Wooden Floor	Private Lobby
Duffy	x	x	x	x	x	x	x	x	x		x
Cole	x	x	x	x	x	x	x	x	x		
Maxine	x	x	x	x	x	x	x	x	x		
Studio E	x	x	x	x	x		x	x			
Studio F	x	x	x	x	x	x	x	x			
Hodgkin	x	x	x	x	x	x	x	x			
Studio B	x	x	x	x	x	x	x	x			
ICF	x	x	x	x		x	x	x		x	
Studio D	x	x	x	x	x						x

Studio Spaces



James and Martha Duffy
Performance Space



Robert W. Cole Studio



Maxine Morris Studio



Studio E



Studio F



Howard Hodgkin Studio



Studio B



Independence Community
Foundation (ICF) Studio



Studio D



Learn more
about
our Spaces

How to Book Space:

All renters must fill out our Space Request Form to book space. Once filled out, most request forms are processed within 48 hours. All first-time renters are required to place a card on file before confirming their booking.

Availability:

Our full calendar of availability may be viewed online.

The Dance Center is typically closed on Sundays. Special event and performance space requests for Sundays will be accommodated on a case by case basis.

Operating Hours

- Mon-Fri 9:00am-9:00pm
- Saturday 9:00am-6:00pm
- Closed on Sundays

Subsidized Rehearsal Space Program

The Mark Morris Dance Group's (MMDG) Subsidized Rehearsal Space Program (SRSP) aims to reduce barriers to accessing high-quality rehearsal space for independent dance artists and companies based in New York City. MMDG receives funding that allows us to reduce the hourly rental fee for dance rehearsal space to \$10. Accessing this rate is simple- no application required. Qualifying artists will be automatically offered the rate. To check if you qualify, click [here](#).

mmdg.org/space-rental



3 Lafayette Avenue | Brooklyn, NY 11217 | 718.624.8400



LIRR; B25, 26, 37, 38, 41, 45, 52, 63, 67, or 103 Bus

The Mark Morris Dance Center is an accessible venue that includes ramps, an elevator, and bathrooms on the first, fourth, and fifth floors.

SUPPORTED IN PART BY

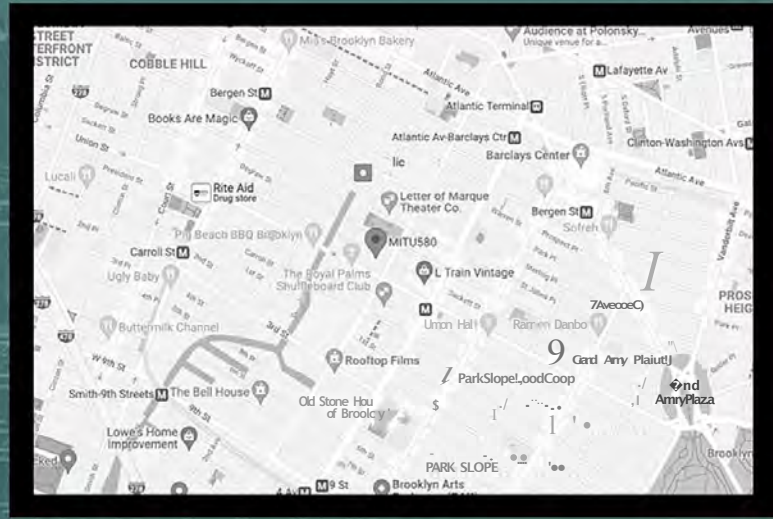




A MULTI-USE
ART SPACE
INTERSECTING
PERFORMANCE
INSTALLATION
AND NEW MEDIA

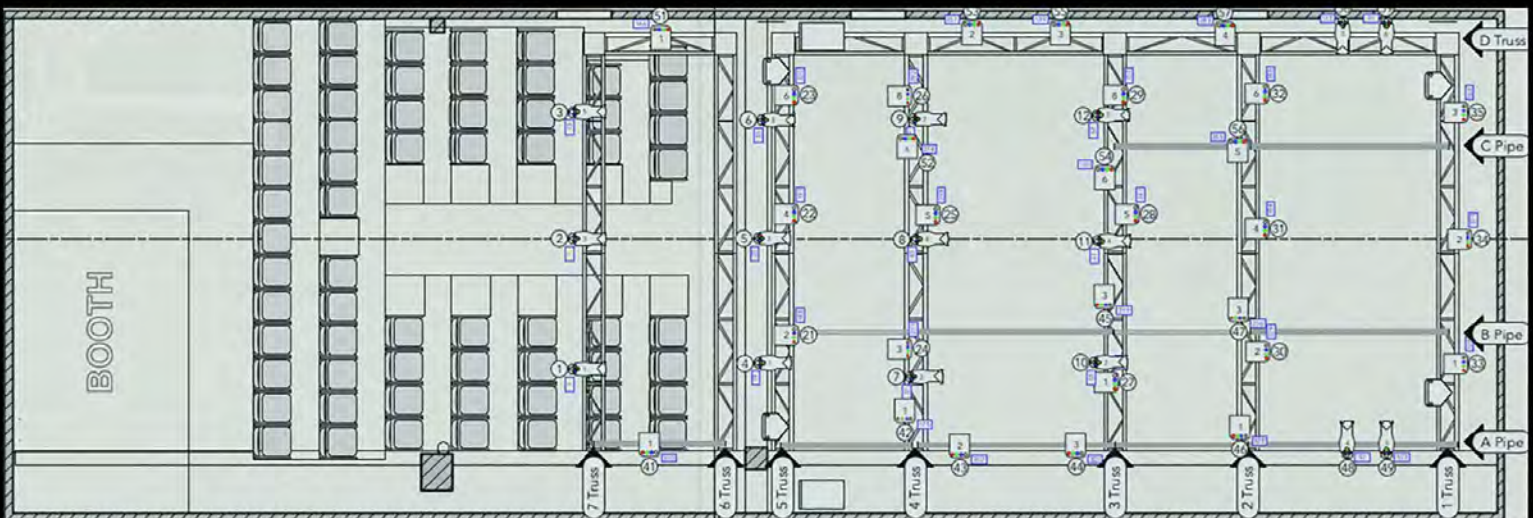
ABOUT THE SPACE:

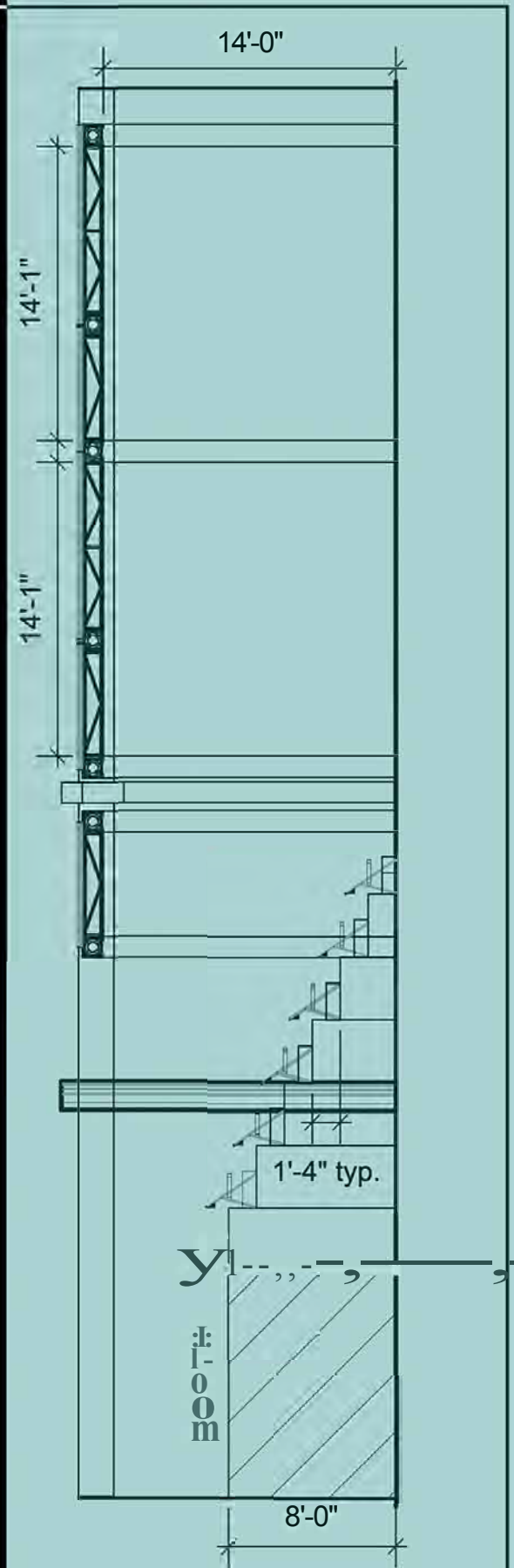
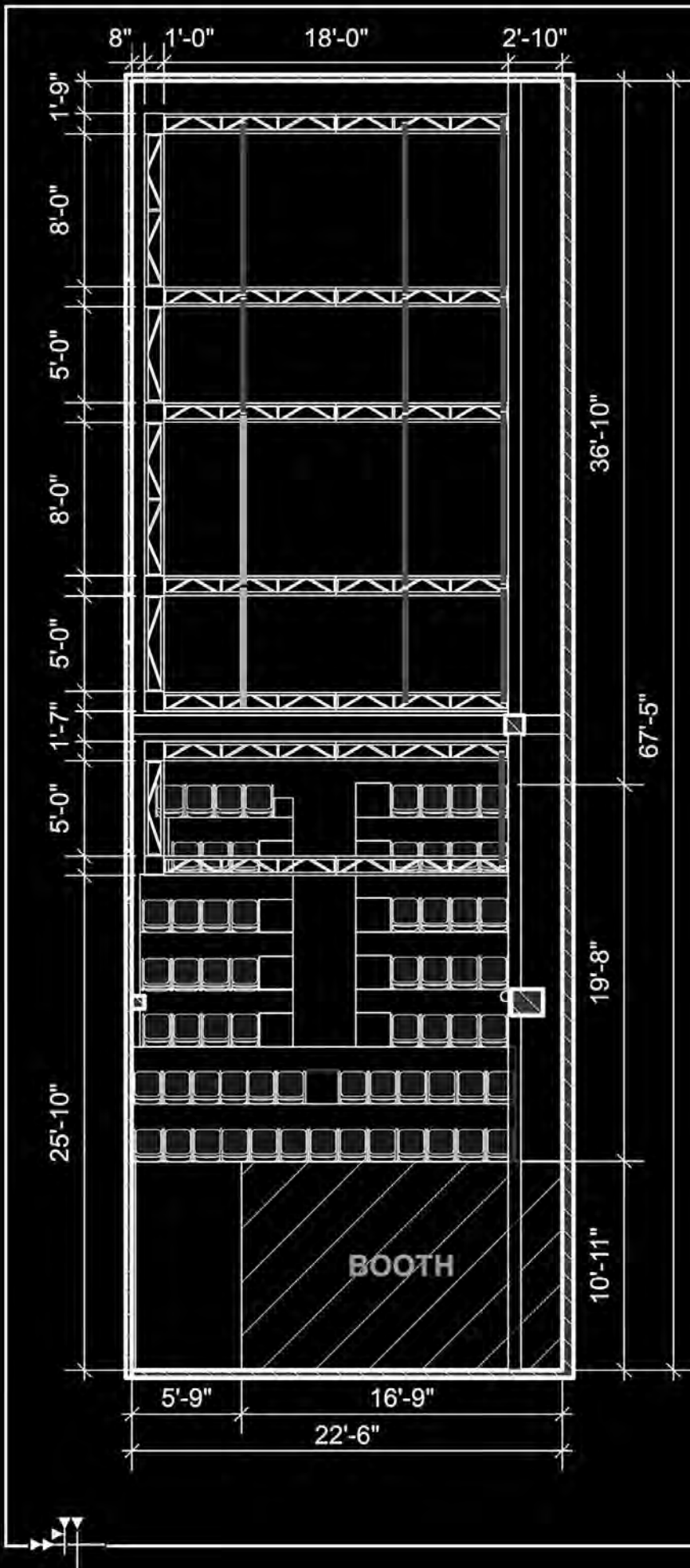
MITU580 is a multi-use art space in Brooklyn, NY founded and operated by interdisciplinary performance company, Mitu. The company has retrofitted this former glass recycling facility into 2,400 square feet of flexible space intended to intersect the fields of performance, installation art, new-media, and design. MITU580 is at once a studio space and performance venue to house all of Mitu's programming, as well as a state-of-the-art production facility capable of hosting all types of innovative performances and events. This facility is a unique gathering place where interdisciplinary arts practice is interrogated, incubated, and produced.



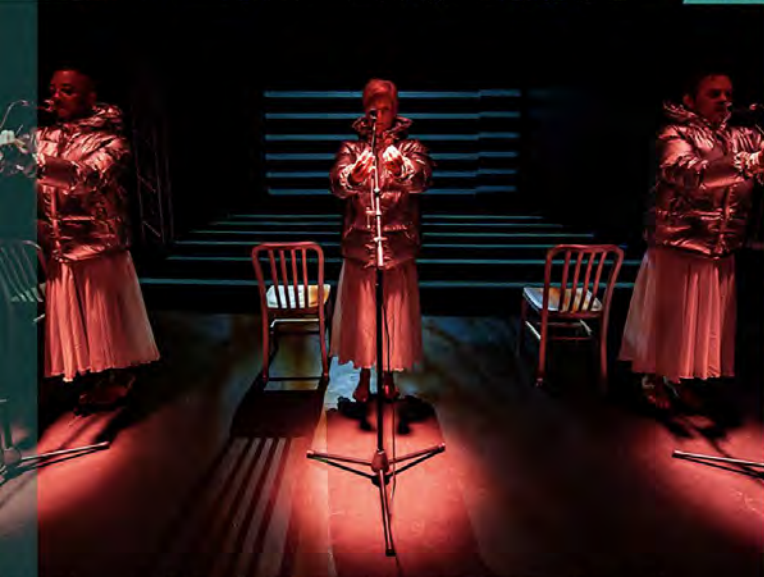
580 Sackett St. Ground Fl, Brooklyn, NY
theatermitu.org/space

SPACE: 55'x22' of flexible performance and exhibition space with 16' high ceilings and a 24' x 14' lobby space
CAPACITY: A legal capacity of 74 including staff and performers with 60 people seated comfortably
LIGHTING: A lighting grid with over 60 theatrical LED instruments and a networked ETC ion 2000 Console
AUDIO: 24-input, 48-channel digital audio mixer with mains, fills, and sub-woofers on a Dante Network
VIDEO: 6 Projectors, multiple video displays, cameras for live-feeds, and a streaming encoder for broadcast





Theater Mitu - 580 Sackett St
Groundplan and Section, ver 0.5



MODULAR WELL EQUIPPED FLEXIBLE ACCESSIBLE



MITU580

TECHNICAL SPECIFICATIONS

SEATING CAPACITY

60 people (maximum)

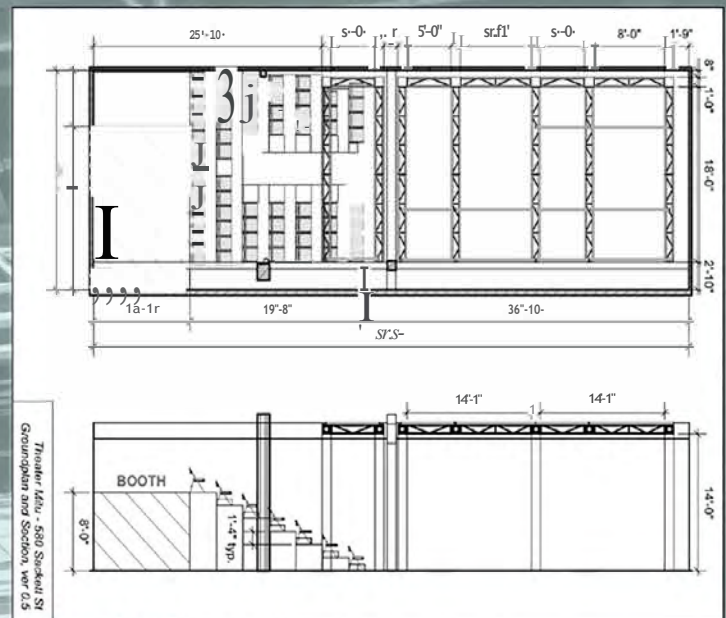


TABLE OF CONTENTS

MITU580

Page 1 - The Space and Front of House

Page 2 - Video and Electrics

Page 3 - Electrics (contd.)

Page 4 - Sound

LARGE SPACE

MITUSSO

TOTAL DIMENSIONS

55'x22' of flexible open space
37'x22' of playing space with risers installed

DOUBLE DOOR ENTRANCE/EXIT TO LOBBY

4'8" wide x 6'8" high

TRUSS GRID

12" box truss; Floor to bottom of truss: 14'-15'
Ceiling height is approx. 16'

CLIMATE CONTROL

Air Conditioning and Heating available in the space
3 windows and 2 skylights that may be open/closed

FLOOR/WALLS

The floor is smooth and clean concrete
The walls are a mix of cement blocks and drywall
All the walls and the floor are charcoal in color

SOFT GOODS

MITU580 has a limited soft goods inventory.
(8) 4.5' x 15' black velour panels

RISERS AND SEATING

(64) Black, padded, armless folding chairs

A system of flexible riser platforms is available.

Typically, these are installed as pictured above but can be rearranged or struck as needed

PROPERTIES

(12) Music Stands

DRESSING ROOM

The dressing room is located inside the main space underneath the booth structure.

(1) all gender dressing room
suitable for a maximum of 8 performers
mirrors, tables
chairs
costume hooks

No showers or laundry facilities.

Performers & crew use single restroom (same as the audience).

FRONT OF HOUSE

MITUSSO

LOBBY AND BOX OFFICE

Theater Mitu's offices are located atop an industrial loft in the front of house area and must remain accessible to Mitu staff. Mitu staff will also require continuous access to the booth, equipment room, and restroom in the lobby.

LOAD-IN AREA

Main Entrance is a standard 80"x 32" steel door.
Entrance to large rear space is a set of double doors measuring 4'8" wide x 6'8" high

VIDEO

MITUSSO

PROJECTORS

- {1} NEC NP-P502HL-2 5000-Lumen Full HD Laser OLP Projector
- {1} NEC M352WS Short Throw Projector
- {1} Optoma EH412ST Short Throw Projector

VIDEO CABLES

- {25} VGA (from 5'-50')
- (15) HDMI (from 6'-50')
- {15} DVI (from 5'-15')

*Additional video equipment available upon request (additional short throw projectors and other items including cameras, video interfaces, tripods, projection mapping software, camera switchers, streaming encoders, etc.). Additional equipment is subject to availability. If you are looking for specific equipment to be included in the rental, please contact rentals@theatermitu.org for detailed information on availability.

ELECTRICS

MITU580

OVERVIEW

MITU580 offers a hung, circuited, and patched (not focused) Rep Plot that must be restored at the end of rental period.

All lighting and sound consoles are connected to a Gigabit Ethernet Hub allowing for control and synching over a network. Cat6 Cable connections are available in the booth and in the playing space/exhibition space.

DIMMER

MITU580 does not have a traditional theatrical dimmer setup as the full lighting rig is LED. 80 Amps of power (four 20amp circuits) are dedicated to lighting. Additional circuits available in the grid for work lights, sound, and video.

CONSOLE

Located in the lofted booth in the rear of the space.

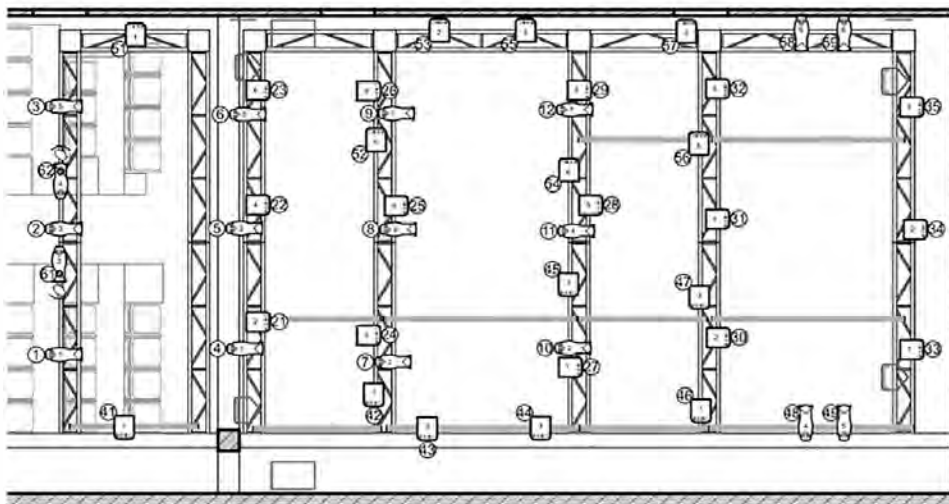
ETC Ion 2000 programmable console with a monitor, keyboard, and mouse.

10 amps of power is dedicated to lighting control at booth location.

The console can be moved with permission from Mitu staff or venue supervisor.

HOUSE LIGHTS/WORK LIGHTS

Simple house light for the standard riser setup is included in the rep plot. There is no dedicated work light system in the space. To allow for flexibility, there is no separate systems dedicated to either house light or work lights.



Plans and sections are available in Vectorworks and PDF.

MITUSSO's technical specifications, seating charts, photos, stage drawings and more are available upon request.

Please email MITUSSO's space manager at rentals@theatermitu.org with questions or to request materials.

ELECTRICS CONTD.

MITUSSO

LIGHTING FIXTURES

- (20) ETC ColorSource 4 Deep blue
(5-pin DMX)
- (6) ETC EDLT 70deg lens for Source 4
- (18) ETC EDLT 50deg lens for Source 4
- (3) ETC EDLT 26deg lens for Source 4
- (2) ETC EDLT 26deg lens for Source 4

- (30) Martin Rush Par 2 RGBW Zoom
(5-pin DMX)

- (4) Chauvet Slim Par Pro (3-pin DMX)

- (4) Phillips Showline SL Nitro 510 Strobes
(5-pin DMX)

- (1) Colorkey KasBar COB Tri 5 75W
RGB LED Wash Bar (3-pin DMX)

- (7) Birdies (MR-16 Lamps)

INTELLIGENT FIXTURES

- (2) Rosco DMX IRIS w/
built-in power supply

- (2) Rosco ICUE MOVING MIRROR
w/ 1 Rosco PSUSI

LIGHTING CABLES

Below is the in-house cable inventory. Much of this is in use when the rep plot is hung and circuited. Additional cable is usually available but MITU580 cannot guarantee anything beyond what is listed here.

PowerCon Cables

- (10) 5' Powercon cable
- (13) 10' Powercon cable
- (7) 15' Powercon cable
- (8) 25' Powercon cable
- (3) 50' Powercon cable

Edison extension cables

- (1) 10' Edison cable
- (3) 15' Edison cable
- (6) 25' Edison cable
- (3) 50' Edison cable

3 pin OMX cable

- (2) 10' OMX cable, 3-pin
- (10) 25' DMX cable, 3-pin

4 pin DMX/XLR cable

- (2) 5' OMX cable, 4-pin
- (2) 15' DMX cable, 4-pin

5 pin OMX cable*

- (7) 5' OMX cable, 5-pin
- (8) 10' OMX cable, 5-pin
- (11) 15' DMX cable, 5-pin
- (8) 25' OMX cable, 5-pin
- (1) 50' DMX cable, 5-pin

*NOTE: Cable inventory varies slightly depending on activity in the space. The Spin DMX and Powercon cables listed above are the minimum that will be available during the rental period. MITU580 cannot guarantee additional or spare cable in the inventory but it is often available.

CONTROL

- (1) DMX Opto Splitter
(ENTEC RDS8, 11N/80UT, 5-pin)
- (4) Chauvet 4-Channel Edison Dimmers
(3-pin DMX)

PIPE & IRON ACCESSORIES

- (5) 18" Sidearm, w/ 1 Tee
- (5) 24" Sidearm, w/ 1 Tee

LADDERS

- (2) 12' A-Frame Ladder

SOUND

MITUSSO

OVERVIEW

There are (2) mains, (4) fills and (2) subs available in the space. {NOTE: The Rep sound plot includes 2 mains, 2 fills, and 2 subs}

There is a digital snake (1/0 rack) in the space connected to the console to allow for easier audio cable-runs.

All speakers can be moved but must be restored to the Rep Plot at the end of the rental.

There is also a Clear Com System available upon request.

MIXING EQUIPMENT

Digital Mixing Console located in the booth at the rear of the space. One 25" AUX cable remains connected to the console for basic playback.

The console cannot be moved without express permission

Yamaha TF-3 Console
Yamaha NY-64D Dante Card
Yamaha TIO-1608 1/0 Rack for TF-3

SPEAKERS

- (2) QSC KW122 Mains Speakers
- (4) Yamaha DXR8 Speaker
- (2) QSC KS112 Subwoofer
- (2) Kustom PASO personal PA system Speakers

SOUND CABLES*

XLR Cable

- {14} 10' XLR Cable
- {13} 25' XLR Cable
- (14) 50' XLR Cable
- (4) 75' XLR Cable
- (1) 100' XLR Cable

TRS Cable

- (10) 5' TRS Cable
- (5) 15' TRS Cable

MICROPHONES

- (4) Shure SM58 microphones
- (4) Microphone stands with boom arms
- (2) Motu Ultralike Mk3
- (2) JPC DI Boxes
- (3) Sennheiser SK100 Wireless Mic Packs
- (4) Countryman Lav Mics
- (3) Sennheiser EW1003G Wireless Mic Receivers (w/ antenna and PSU)
- {1} Sennheiser wireless handheld mic E835
- {1} Sennheiser EWG4 Wireless Adapter
- (4) Rode NTG4 Shotgun Mics
- (2) Zoom HS

PLAYBACK

Hookups for Computer Playback are available and up to 24 Channel playback via Dante.

*Additional sound cables, equipment, and software may be available upon request or rented from MITU580 for an additional fee. {This includes but is not limited to TRS cable, AUX cable, various audio interfaces, and peripheral devices}

THEATRE FOR A NEW AUDIENCE

P O L O N S K Y S H A K E S P E A R E C E N T E R



photo © David Sundberg/Etso

Polonsky Shakespeare Center is the first theatre built in New York City for Shakespeare and classic drama since the 1960s. Opened in 2013, with its elegant courtyard Mainstage and multi-tiered lobby, Polonsky Shakespeare Center offers a rare combination of scope and intimacy ideal for theatrical performance, as well as cultural and corporate events, film screenings, receptions, cocktail parties, film/television shoots, and more.

The **Samuel H. Scripps Mainstage** (pictured above) features a flexible orchestra seating configuration, as well as two seating galleries. Seating may be configured as proscenium, thrust, runway, or in-the-round, and may include as few as 180 or as many as 299 seats. The height of the Mainstage – twice that of a typical Off-Broadway theatre – and trapped floor allow for a vast array of staging possibilities.

RATES: WEEKLY \$30,000/WK + EXPENSES* DAILY \$5,000/DAY + EXPENSES*

Rental rates include use of our space and theatrical equipment. Use of specialized equipment may incur additional costs. Staffing and cleaning costs not included. Rates can be pro-rated for partial days, but not partial weeks. Proof of insurance and security deposit required.

SMALLER SPACES: Polonsky Shakespeare Center also houses the **Theodore C. Rogers Studio**. This 26' x 20' rehearsal studio is insulated by sound proof doors and has freight elevator access. The **Irving Harris Foundation Lobby** is also available for rentals. The lobby's sleek, modern atmosphere is perfect for parties, receptions, or smaller scale presentations and events. Studio and lobby rates available upon request.

**Pending availability, reduced rates for all our spaces may be available to DBAA members within two months of the rental date(s). Please inquire for further details.*

For further details please email rentals@tfana.org or call (212)229-2819 x67.

RENTAL OPPORTUNITIES AT BKCM



RENT OUR CONCERT HALL!

Host your next event in our Concert Hall! Our space features a brand new Steinway Model B grand piano, full RGB control on wall sconces and stage spotlights, as well as a 4K mounted projector with theater-quality video projection.

Visit BKCM.ORG/RECITAL-HALL to learn more or submit a rental inquiry.



RENT OUR GARDEN!

We are excited to offer our garden space for rental to our community. The space is perfect for birthday parties, baby showers, special events, cultural programming, weddings and more. There is coverage for rain, heat in the winter and bathroom access close by.

Please email rentals@bkcm.org with your name, contact information, dates you are looking to rent and a short description of your event.



RENT OUR STUDIOS!

We are pleased to offer our 17 studios – each home to a Steinway piano – for rent by musicians, writers, composers, theater-makers, and dance artists. Located at our building in Park Slope, Brooklyn, our studios are available to rent Monday-Friday from 10:00am to 9:00pm starting at \$12.50/hour through our digital booking platform.

Visit BKCM.ORG/STUDIORENTALS to learn more!

RENT ROULETTE

509 ATLANTIC AVENUE • BROOKLYN, NY 11217 • events@roulette.org • 917.267.0370 • roulette.org/rentroulette



SPACE

A revitalized 1928 theater in the heart of Downtown Brooklyn, Roulette features a dramatic proscenium and charming balcony, seating for up to 400 (550 standing), unsurpassed acoustics and sightlines, and superb production equipment. The 6,000-square-foot theater is available to rent year round for galas, film shoots, concerts, weddings, bar/bat mitzvahs, conferences, and more.

CAPACITY

Roulette can accommodate up to 550 people and can be configured for a variety of events with unique seating arrangements.

Ballroom (concert)

Sq Ft: 2,500

Standing: 400

Sitting: 240

Mezzanine (Fixed)

Sq Ft: 2,000

Standing: N/A

Sitting: 160

Lobby

Sq Ft: 600

Standing: 100

Sitting: N/A

STAFF

Roulette offers pre-event coordination with our staff leading up to your event. An Audio/Visual Staff member and Event Liaison will work with you the day-of to ensure a smooth experience.



RENTROULETTE

509 ATLANTIC AVENUE • BROOKLYN, NY 11217 • events@roulette.org • 917.267.0370 • roulette.org/rentroulette

VENUE RENTAL



Consider the Location:

Situated on the waterfront in the vibrant neighborhood of Dumbo, Smack Mellon offers a truly unique venue for private parties and corporate events. The building is across the street from the picturesque Brooklyn Bridge Park between the Brooklyn and Manhattan Bridges with breathtaking views of the City skyline.

Consider the Dramatic Architecture:

Located in the recently renovated “Boiler Building”, Smack Mellon’s gallery is an especially exciting space with tremendous architectural elements. The 6,000 square foot gallery boasts a ceiling that soars to 35 feet. There are 25 windows on two levels providing beautiful light and a spectacular view of Manhattan and the East River.

S m a c k M e l l o n

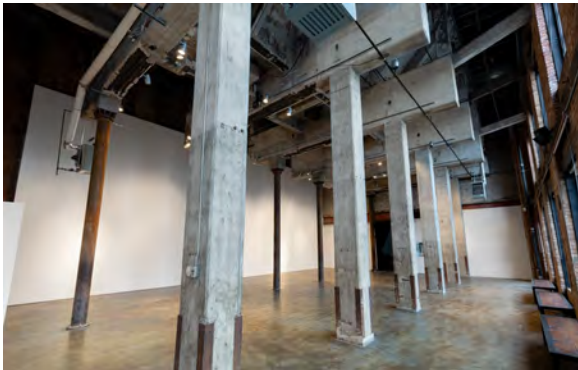
Consider the Convenience:

Smack Mellon is just one subway stop from Manhattan with easy access to the BQE, Manhattan & Brooklyn Bridges and ample parking in nearby garages. The building is handicap accessible.



We are offering a 5% discount for DBAA members on a full day rate!

Plus a special DBAA hourly rate for a 2 to 3 hour event during an exhibition!



Please contact our Events Team for more information:

p. 718.834.8761
rentals@smackmellon.org



And head to our website for more images and recommended vendors:

Smack Mellon
92 Plymouth Street
Brooklyn, NY 11201
smackmellon.org/venue-rental/

Photos by Etienne Frossard & Cibebe Vieira

The Center for Fiction: Space Rentals

The Center for Fiction offers a variety of rooms for all types of events, from formal lectures to sets for filming. All of our spaces are ADA compliant. Please contact rentals@centerforfiction.org for more information.

The Auditorium

This flexible space can host seated events for 140 in a lecture hall format or adapt for smaller groups. It comes with state of the art audio capabilities and a video wall fills the back wall for film screenings and presentations. The stage adjusts to various heights and can be arranged as bleachers for additional seating options. Our stylish black chairs and four large conference-style tables are free for use. The adjacent cafe space may also be rented with the auditorium.



The Members Lounge

Our intimate Members Lounge is a lovely space for a cocktail party, wedding, office retreat, or meeting. It is located on our quiet second floor and can be divided by a built-in glass partition with a conference table with room for 12 at one end of the space, and a cozy living room area on the other. The room also includes a ceiling-mounted screen, built-in speakers and sound system.

The Members Lounge may be rented in conjunction with the entire second floor for larger events and our outdoor terrace during the warmer months.



Meeting Rooms

The Center offers a variety of meeting rooms on our quiet second floor to rent for small gatherings. Each of our rooms has a conference table & chairs, Wi-Fi, and A/C. White boards, easels, and other presentation materials are also available upon request. Our largest room seats 14 around a conference table, but can accommodate a few more guests if necessary. The other spaces seat 10.

